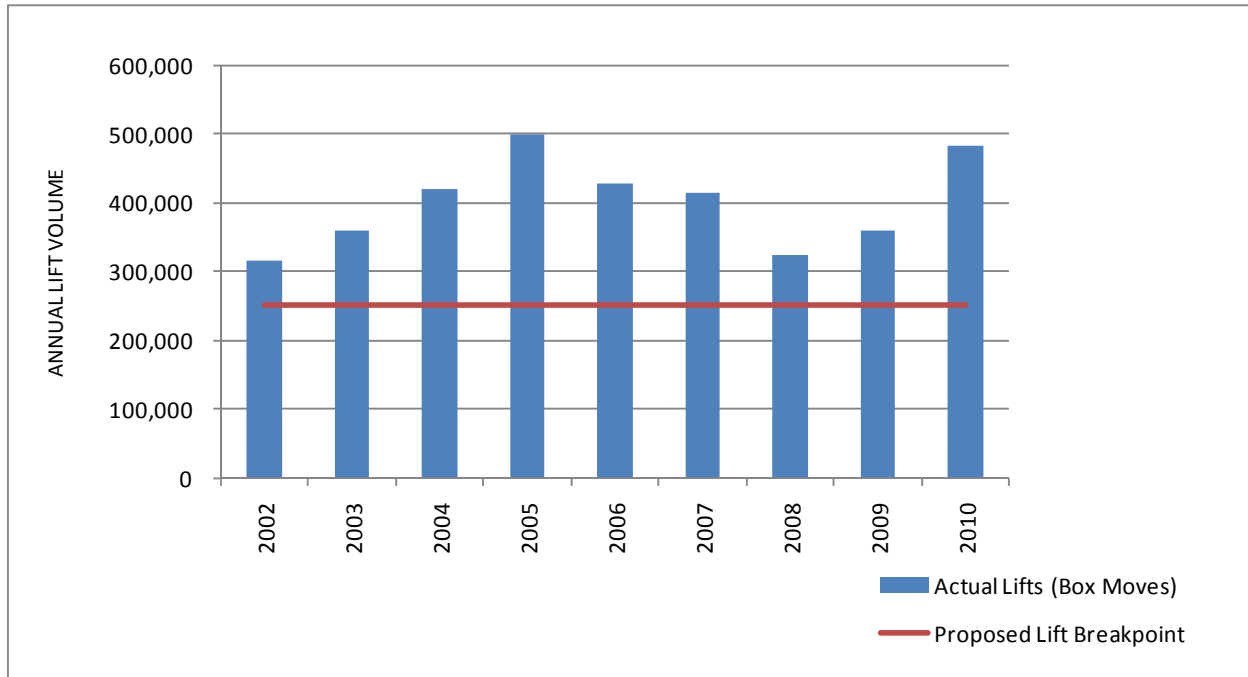


Attachment B

Terminal 18
Annual Lifts Compared to Proposed Lift Breakpoint
Historical Activity – by year



Terminal 18	Actual Lifts (Box Moves)	Proposed Lift Breakpoint	For Info Only Actual TEU's
2002	316,938	250,000	555,339
2003	358,760	250,000	627,168
2004	419,460	250,000	740,279
2005	498,742	250,000	878,844
2006	428,808	250,000	756,714
2007	414,968	250,000	734,661
2008	323,395	250,000	567,951
2009	360,630	250,000	645,342
2010	481,504	250,000	853,738

The above graph shows the actual lift volume (box moves) for Terminal 18 since 2002.

Explanation of chart components:

- **Blue bars** – actual annual lift volume (box moves)
- **Red line** – the proposed annual lift breakpoint, below which the guaranteed annual minimum of 1,250 crane hours applicable to specific Port-owned cranes would not apply